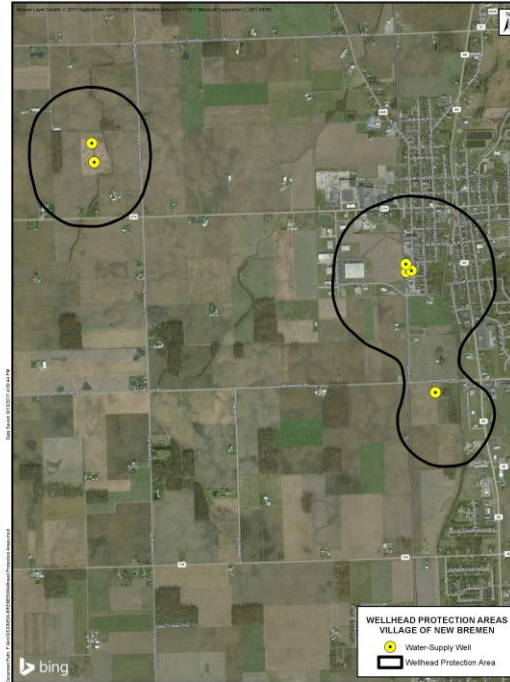




Your Drinking Water

The Village of New Bremen uses groundwater as its water supply. Groundwater is rain or snow that slowly soaks down into the ground and is stored in the pore space of the soil and bedrock. The groundwater to supply New Bremen is pumped using six supply wells located at three locations. The areas surrounding the supply wells is known as the wellhead protection area.



Wellhead Protection Areas for the
Village of New Bremen

What is Wellhead Protection?

Wellhead protection is a way to protect your drinking water by managing an area around your community's water supply wells to prevent contamination. By safely managing this important area you can help ensure a safe water supply now and in the future.

The Wellhead Protection Plan

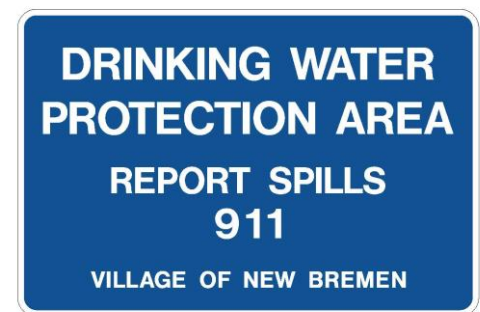
The Village of New Bremen has developed a Drinking Water Source Protection Plan to protect its water supply from contamination. The Protection Plan for New Bremen has been endorsed by Ohio EPA.

What You Can Do

Wellhead protection depends of your efforts to prevent pollution. Here are some actions you can take to better protect your drinking water supply:

- Never pour used oil, antifreeze, paint thinner, or other hazardous chemicals on the ground or down the drain. Take them to a recycling center or to a household hazardous waste collection day.
- Check for and fix leaks in storage tanks (i.e., home heating oil/kerosene) at your home or business.
- If you have a septic system, make sure it is inspected and maintained.
- Limit use of chemicals, fertilizers, pesticides, and other hazardous products. Always follow the label directions.
- Have any unused wells on your property properly abandoned.

Have You Seen This Sign?



These signs have been placed along roadways at the edge of the wellhead protection area notifying people they are entering an area under management to protect the drinking water supply.

